

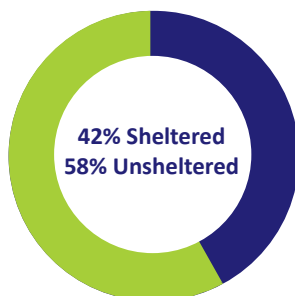
Highlights

This infographic includes data from the Comox Valley homeless count conducted on the evening of March 6 and during the day of March 7. This data provides an overall snapshot of homelessness in the Comox Valley, informs B.C.'s Homelessness Action Plan, and will provide a baseline to measure progress.

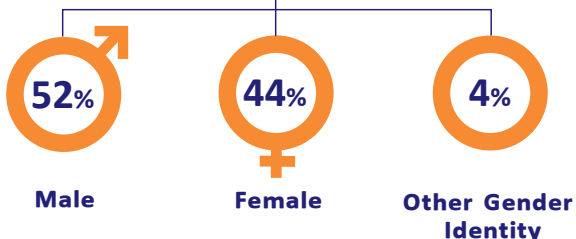


117

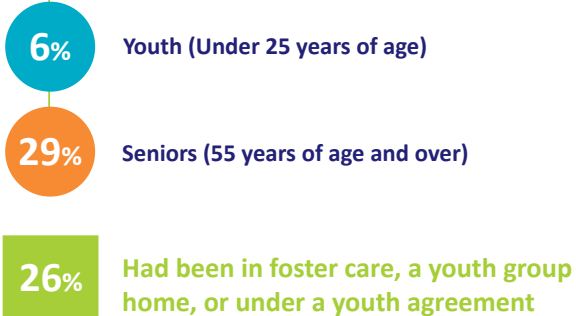
People were identified as experiencing homelessness



GENDER IDENTITY



AGE BREAKDOWN



INDIGENOUS OVERREPRESENTATION



32%

OF SURVEY RESPONDENTS SELF-IDENTIFIED AS INDIGENOUS

COMPARED TO

6%

OF THE GENERAL POPULATION (2016 CENSUS)

MAIN BARRIERS TO ACCESSING HOUSING



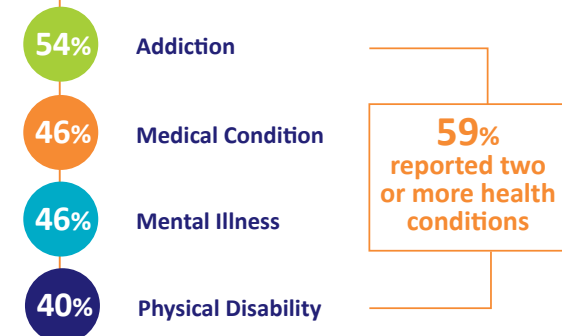
SOURCES OF INCOME



LENGTH OF TIME HOMELESS



HEALTH CONDITIONS



LENGTH OF TIME LIVED IN COMMUNITY



Limitations and Methodological Considerations

Please note the following considerations in reviewing the data in this infographic.

In the spring of 2018, the Province of British Columbia funded homeless counts in 12 B.C. communities. The Homelessness Services Association of BC, Urban Matters and BC Non-profit Housing Association coordinated these counts and prepared this report. This report will inform B.C.'s Homelessness Action Plan and provide a baseline to measure progress.

Data from counts in the 12 B.C. count communities constitutes a benchmark to measure progress made to reduce homelessness over time but does not allow for any current longitudinal comparisons.

- Point-in-Time (PiT) homeless counts provide a snapshot of people who are experiencing homelessness in a twenty-four-hour period, their demographic characteristics, service use and other information.
- For the purpose of counts conducted in the 12 provincially funded B.C. communities, an individual was defined as experiencing homelessness if they did not have a place of their own where they paid rent and could expect to stay for at least 30 days. This included people who:
 - Stayed overnight on the night of the count in homeless shelters, including transition houses for women fleeing violence and youth safe houses, people with no fixed address (NFA) staying temporarily in hospitals, jails or detox facilities (defined as "sheltered"); and,
 - Stayed outside in alleys, doorways, parkades, parks and vehicles or were staying temporarily at someone else's place (couch surfing) and/or using homelessness services (defined as "unsheltered").

- During the count, we conduct surveys with people who identify as experiencing homelessness. In areas where surveys are not possible, and to support the PiT count, we collect additional information from shelter operators, hospitals, jails and BC Housing.
- PiT counts are an undercount and represent only those individuals identified during a 24-hour period.
 - This is because not everyone experiencing homelessness can be found and not everyone who is found is willing to be surveyed.
 - While PiT Counts are an accepted methodological tool, the numbers are understood to be the minimum number of people who are experiencing homeless on a given day in that community.
- A companion report ("2018 Report on Homeless Counts in B.C.") is available separately.
 - In addition to data from the 12 B.C. funded counts, the report includes data from six federally funded 2018 homeless counts, two other independent 2018 counts, data from four counts conducted in 2017 and shelter data from other B.C. communities (collected by BC Housing).
 - The approach provides a general picture of homelessness in B.C. with coverage of more than 85% of the province by population.



¹ Percentages are based on the number of people who responded to survey questions and not the total number of people identified as experiencing homelessness.